

The GammaStone panels, assembled on the cell, also integrate perfectly with the columns and stringcourses. The system can be installed with a frame carried over, or alternatively, it can be applied directly to the façade thanks to butterflies and pressers.



STICK FACADE

Stick Facade System



The GammaStone panels, assembled on the cell, also integrate perfectly with the columns and stringcourses. The system can be installed with a frame carried over, or alternatively, it can be applied directly to the façade thanks to butterflies and pressers.

This system's performance in terms of thermal efficiency, sound insulation and water resistance is very high. Thanks to the sealing from the outside, it is also further guaranteed an incredible resistance to air and water. In the same way, the aesthetic result is unparalleled, being extremely attractive.



Large format



Thermal insulation



Acoustic insulation



Resistant to hurricanes



Impact Resistant



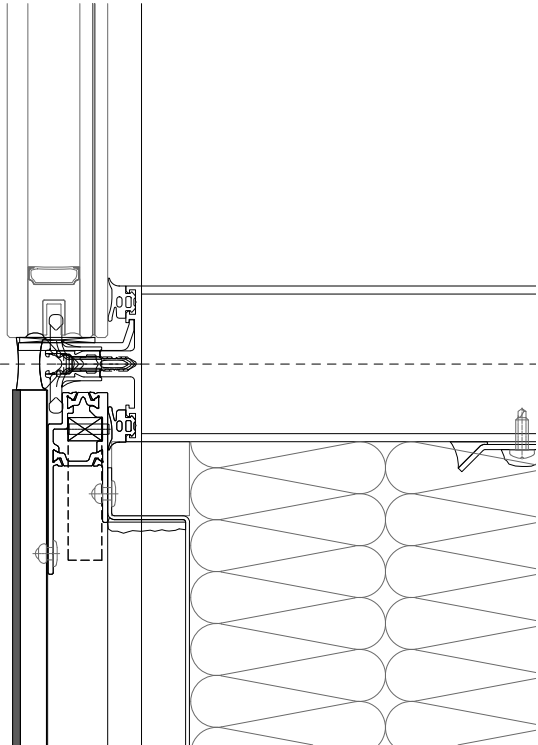
Resistant to thermal shocks



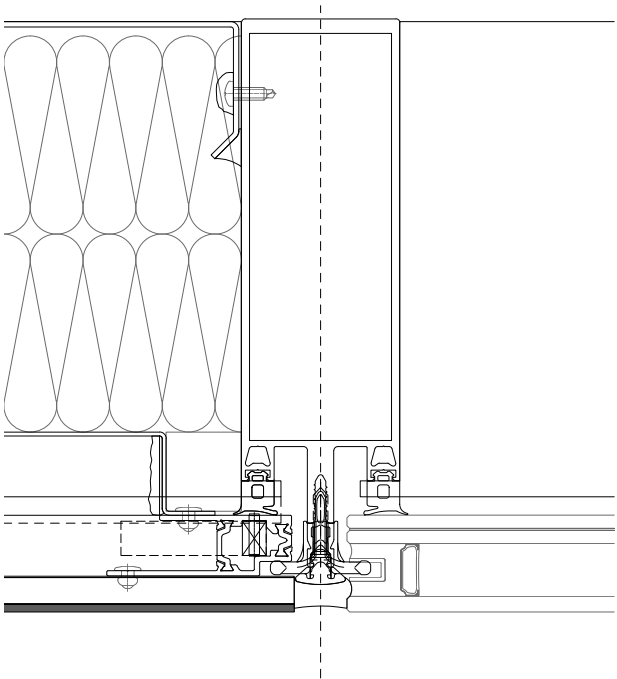
Energy Saving



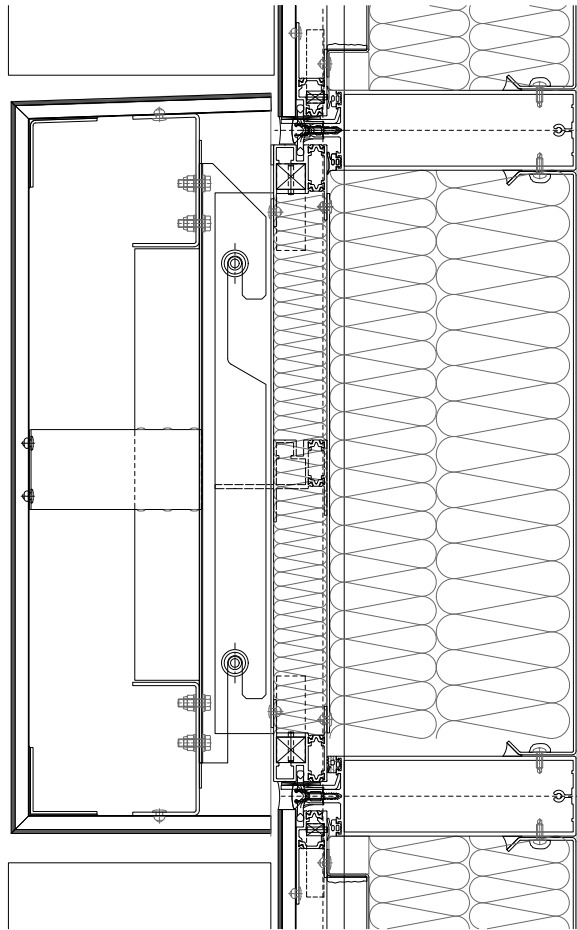
Vertical section



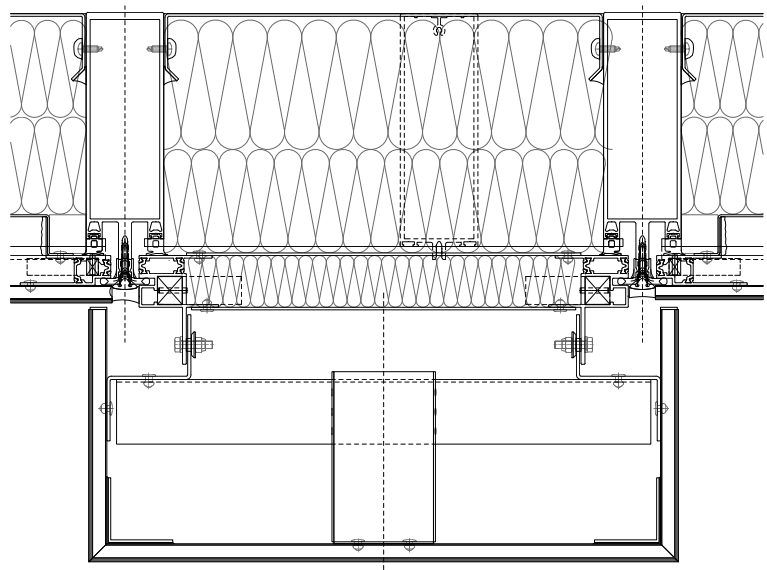
Horizontal section



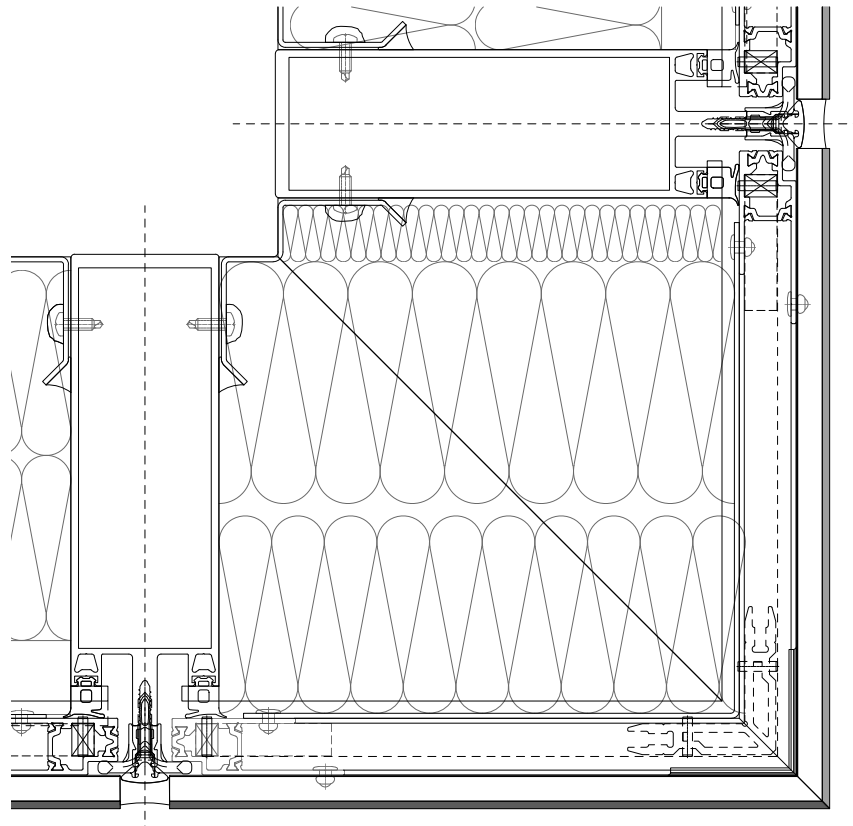
String-courses section



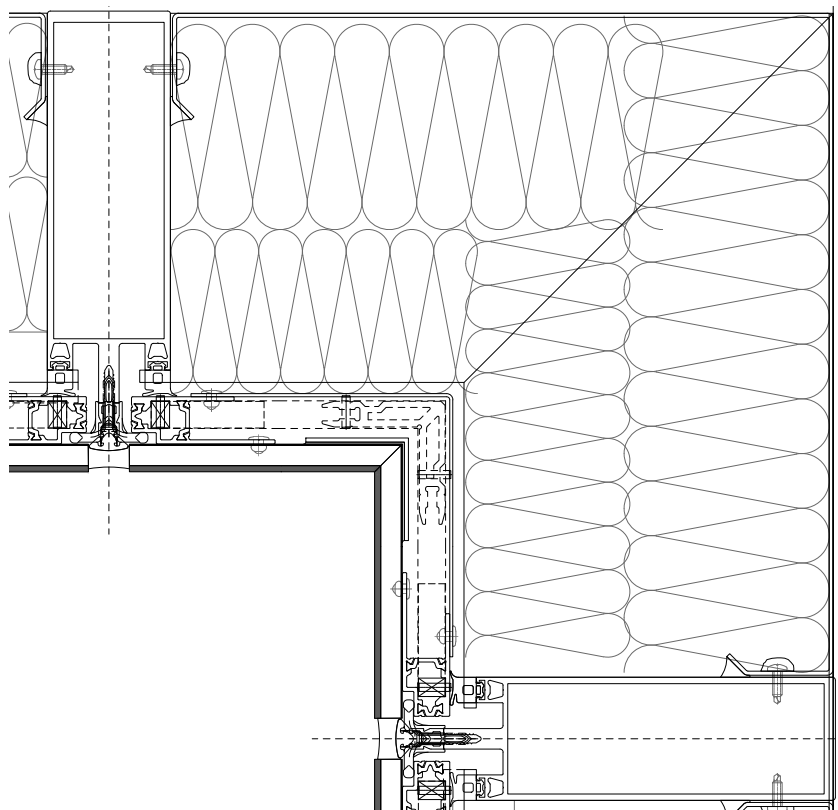
Column section



External corner section



Internal corner section





The GammaStone panels, assembled on the cell, also integrate perfectly with the columns and stringcourses. The system can be installed with a frame carried over, or alternatively, it can be applied directly to the façade thanks to butterflies and pressers.

STICK FACADE