

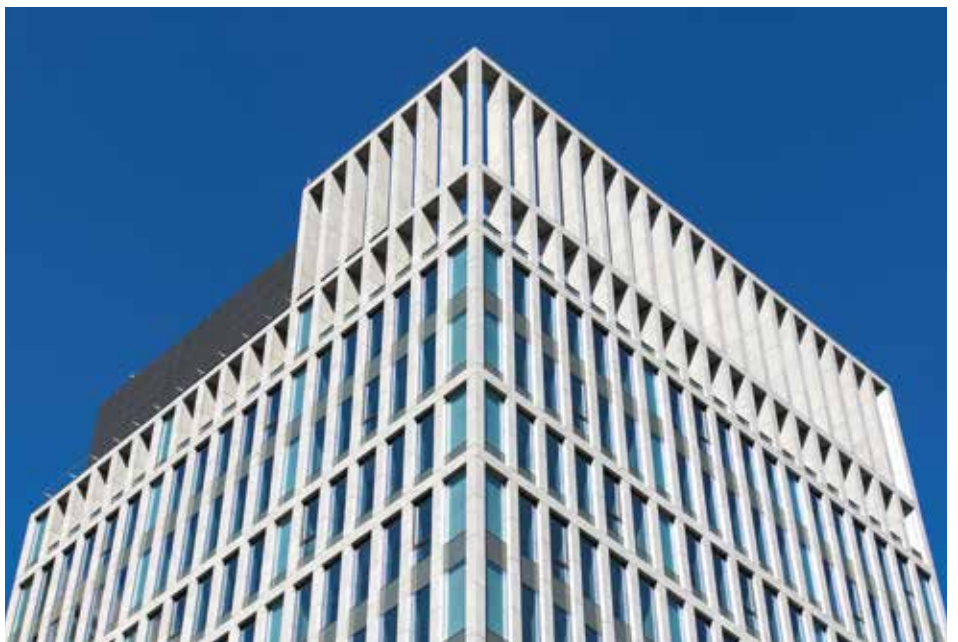


# COLUMNS AND STRINGCOURSES

## Columns and Stringcourses

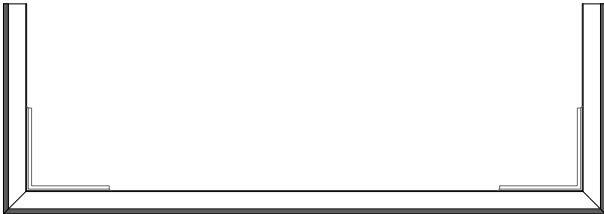
GammaStone produces pre-assembled large monolithic columns and string-courses, ready to be installed with perfect finishes. The columns are structural and decorative elements that, at the same time, enhance the external and internal spaces. Monolithic columns for beams, pillars and other elements allow high engineering of the product, for example, the systems can be placed inside the elements themselves.

Our systems also produce string-courses, elements used to decorate horizontally a certain level of the cladding or the entire façade. The string-course is also used in ventilated façades and is a decorative element that can be easily combined in countless variations.





Column ————— • String-course ————— •





# COLUMNS AND STRINGCOURSES